

# CERTIFICATE



**Management system as per  
EN ISO 9001:2015, EN ISO 14001:2015, ISO 45001:2018**

In accordance with TÜV AUSTRIA procedures, it is hereby certified that



**Rhomberg Sersa Rail Group  
Mariahilfstraße 29  
6900 Bregenz  
AUSTRIA**

applies a management system in line with the above standard for the following scope

**Mechanised Track Construction, Conventional Track Construction,  
Rail Systems, Products & Services, Welding, Labour & Equipment Supply,  
New Construction / Multidisciplinary Projects,  
Machine Maintenance Management for 3rd Party**

Certificate Registration No. 20100151450147 / BT00  
20104151450148 / BT00  
20116203009519 / BT00

Valid until 2027-10-12  
Initial certification: 2015-10-13

Certification Body  
at TÜV AUSTRIA GMBH

Vienna, 2024-09-02

This certification was conducted in accordance with TÜV AUSTRIA auditing and certification procedures and is subject to regular surveillance audits.

TÜV AUSTRIA GMBH Deutschstraße 10 A-1230 Wien [www.tuv.at](http://www.tuv.at)



Online Verification



[www.tuv.at/certcheck](http://www.tuv.at/certcheck)



## Attachment to the Certificate

Nr. 20100151450147 / BT00, 20104151450148 / BT00, 20116203009519 / BT00

The certificate is valid for the following subsidiaries

sub certificate BT01 (EN ISO 9001:2015, EN ISO 14001:2015, ISO 45001:2018)

**Rhomberg Sersa Bahntechnik GmbH**  
A-6900 Bregenz, Mariahilfstraße 29

total- and general contractor, fixed tracks, track system technology, project management, installations, tunnel reconstruction & safety

sub certificate BT02 (EN ISO 9001:2015)

**Rhomberg Sersa Bahntechnik GmbH**  
D-45326 Essen, Krablerstraße 165

railway technology, electrical installation, project management

sub certificate BT03 (EN ISO 9001:2015)

**RS safetec GmbH**  
A-6900 Bregenz, Mariahilfstraße 29

planning, delivery, installation, maintenance of side electrical installation, construction lights and safety equipments

sub certificate BT04 (EN ISO 9001:2015)

**Bahnbau Wels GmbH**  
A-4600 Wels, Haidestraße 53

railway construction and mechanized track maintenance, operation, maintenance and repair of track construction machines, projects trade and logistics

sub certificate BT05 (EN ISO 9001:2015)

**Bittner Bahn- und Gleisbau GmbH**  
A-4600 Wels, Haidestraße 53

commercial line construction

sub certificate BT06 (EN ISO 9001:2015)

**Rhomberg Gleisbau GmbH**  
A-6900 Bregenz, Mariahilfstraße 29

commercial line construction

sub certificate BT07 (EN ISO 9001:2015, EN ISO 14001:2015, ISO 45001:2018)

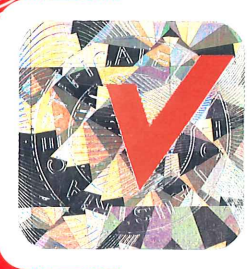
**Universale Bau GmbH**  
A-5621 St. Veit/Pg. – Salzburg, Gewerbestraße 10a

commercial line construction, cable construction, rail civil engineering

sub certificate BT08 (EN ISO 9001:2015, EN ISO 14001:2015, ISO 45001:2018)

**Rhomberg Fahrleitungsbau GmbH**  
A-2351 Wiener Neudorf, IZ-NÖ Süd, Straße 3, Objekt M1/II

marketing and sales, system design and engineering, project planning and execution of catenary, power supply / electrification systems / 50-Hz-installation and network control including maintenance and after sales service and multidisciplinary projects



sub certificate BT09 (EN ISO 9001:2015)

**Rhomberg Sersa Rail AG**  
CH-8048 Zürich, Badenerstrasse 694

construction and maintenance of track systems, traction current systems, safety systems, signalling and cable systems, project management of railway technology projects, evaluation and introduction of new processes in railway technology, all types of welding work in the track area, personnel leasing, sale, repair, maintenance and calibration of commercial products in the track area

sub certificate BT10 (EN ISO 9001:2015)

**Rhomberg Sersa Rail Tec AG**  
CH-5612 Villmergen, Nordstraße 1

construction and maintenance of track systems, traction current systems, safety systems, signalling and cable systems, project management of railway technology projects, evaluation and introduction of new processes in railway technology, all types of welding work in the track area, personnel leasing, sale, repair, maintenance and calibration of commercial products in the track area

sub certificate BT11 (EN ISO 9001:2015)

**Rhomberg Sersa Rail Machine AG**  
CH-8307 Effretikon, Vogelsangstraße 6

mechanised track construction and truck maintenance, measuring systems for track construction machines, maintenance of track-bound vehicles, evaluation and introduction of new procedures

sub certificate BT14 (EN ISO 9001:2015)

**SIT Schienenschweiss- & Isoliertechnik Rostock GmbH**  
D-18055 Rostock, Kassebohrer Weg 11-12

execution of permanent way welding, insulated joints, rail grinding and rail destressing operations

sub certificate BT17 (EN ISO 9001:2015, EN ISO 14001:2015, ISO 45001:2018)

**Rhomberg Sersa Deutschland GmbH**  
D-12487 Berlin, Groß-Berliner Damm 86-88

planning, preparation and implementation of track construction services (ballast track and slab track), cable foundation and track civil engineering, level crossing and platform construction work of all kinds, installation and removal of twin-beam temporary bridges, renovation of tracks and switches with the **SERSA SCREW HOLE RENOVATION SYSTEM SLS®**, renovation of concrete sleepers with the **SERSA SLEEPER CRACK GROUTING®**, maintenance and management of track systems, ceiling closure by means of paving, slabs or asphalt, equipment of roads and railways

sub certificate BT19 (EN ISO 9001:2015, EN ISO 14001:2015, ISO 45001:2018)

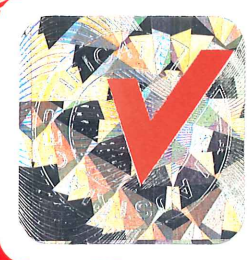
**Jumbo Tec GmbH**  
D-03139 Spremberg, Schwarze Pumpe, An der Heide, Postfach 10 01 03

preparation and implementation of track construction projects and provision of all kinds of track building machines and other technical and human resources, preparation and implementation of all business connected to this purpose  
revision and maintenance of railway and road-rail vehicles and trading with these machines and spare and wear parts

sub certificate BT22 (EN ISO 9001:2015, EN ISO 14001:2015, ISO 45001:2018)

**Rhomberg Sersa UK Limited**  
UNITED KINGDOM- Doncaster, Unit 2 Sarah Court Yorkshire Way DN3 3FD

railway engineering and service provider specialising in design and construction of slab track solutions, track renewal and maintenance, tunnels, stations, consultancy, planning, and design



sub certificate BT27 (EN ISO 9001:2015)

**Rhomberg Sersa Canada Inc.**  
Ontario, K6V 4T1, 2 Courthouse Avenue, Suite 400, Brockville

all track activities involved in constructing new track, from final earthworks, laying ties and rail, ballasting and surfacing, welding, CWR installation, track inspection and commissioning. Core competencies in all conventional ballasted track, slab track, turnouts and crossovers as well as advisory and project delivery of rail systems, track construction and maintenance activities

sub certificate BT28 (EN ISO 9001:2015, EN ISO 14001:2015, ISO 45001:2018)

**Rhomberg Sersa Vossloh GmbH**  
D-54343 Föhren, Industriepark Region Trier, Jean-Monnet-Straße 14

inspection, analysis and management of railway infrastructure; professional training and further qualification (BahnWege-Seminare); symposia; network digitization, construction and maintenance of railways and points; Wheel/Rail System-Service

sub certificate BT30 (EN ISO 9001:2015, EN ISO 14001:2015, ISO 45001:2018)

**Rhomberg Sersa Ireland Ltd**  
IRL- Kildare R51 F05, Unit 12, Kildare Town Centre, Claregate Street

railway construction and mechanised track maintenance operation, maintenance and repair of track construction machines, ancillary projects and logistics

Subzertifikat BT35 (EN ISO 9001:2015, EN ISO 14001:2015, ISO 45001:2018)

**Donatsch Söhne AG**  
CH-7302 Landquart, Sägenstrasse 14

manufacture of welded components and assemblies in the areas of cantenary, rail superstructures, rail vehicles, avalanche protection and mechanical and structural engineering. Repair and conversion of rail vehicles. Machining work in the areas of railway superstructure and contract manufacturing. Manufacture of fencing products, pipe couplings and various customised solutions

*Noraf*

Certification Body  
at TÜV AUSTRIA GMBH

Vienna, 2024-09-02



Online Verification



[www.tuv.at/certcheck](http://www.tuv.at/certcheck)

page 3/3